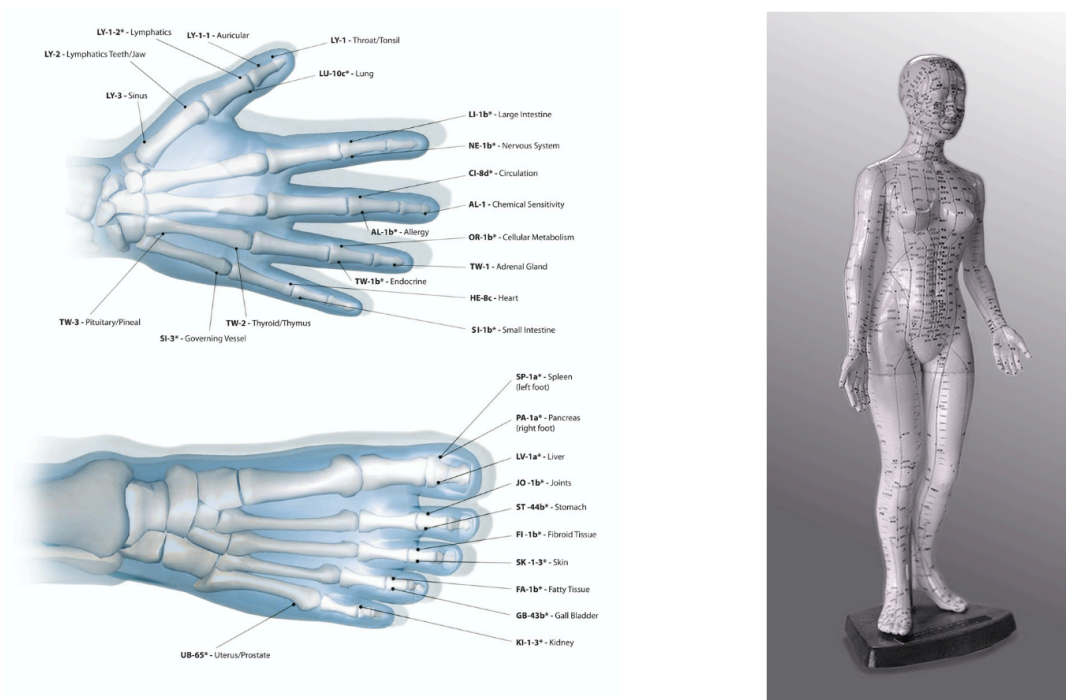
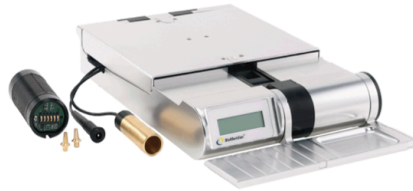




According to European medical research, acupuncture points are related to the body's organs and organ systems. Major groups of points are connected through channels, or meridians. Twenty of these meridians begin or end on the hands and feet.



As a client moves toward or away from health, the condition of any particular organ or system can be sensed along the meridians at representative points like those shown above. As a result, stress associated with the corresponding organs can be surveyed using the indicated points.



Used to conduct a comprehensive evaluation of a person's energetic health and balance. This process involves measuring electrical conductivity at responsive points (meridian points) on the skin typically on the hands and feet. The location of the test points generally correspond to those of acupuncture points. These measurements are recorded to help provide a profile of a client's present condition.

After the initial measurements have been taken and recorded, the results can be reviewed. If stress values are above or below equilibrium, the System's extensive database will allow consideration of a wide range of possibilities that might help the patient regain a healthy balance.

Overall, provides a completely non-invasive method for gaining valuable information about the body's vital functions. The primary objective of this procedure is to disclose patterns of stress and to provide feedback for use in a program to help restore each system and meridian to an appropriate balance.

The system does not provide a medical diagnosis. If clients suspect that they need medical intervention they should consult their physicians who can provide medical diagnosis and prescribe appropriate treatment regimens.

The device is an excellent source of information about your energetic health – helping your practitioner to help you.

The device provides extraordinary perspective on the state of the body's energetic health. A practitioner may choose to use the information gathered to determine the next step in a client's health care.

- Non-invasive sensitivity screening. No scratch testing or injections are necessary.
- Nutritional evaluations can help patients who are looking for nutritional balance.
- Consider possible complementary approaches that may help a client achieve a more balanced energetic state.
- Test for toxicity and drainage levels, and their effects on energy and organ functions.
- Help clients maintain the structural or functional integrity of important body systems.

If you have specific questions or would like to schedule an appointment for testing, please contact me email or cell phone.

Bring Your Life Back To A Healthy Balance